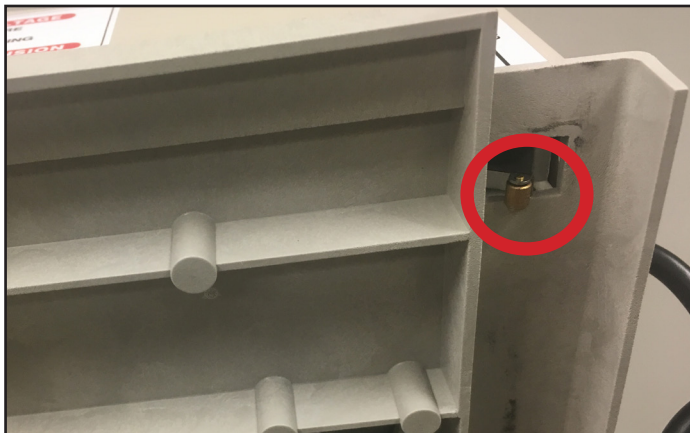
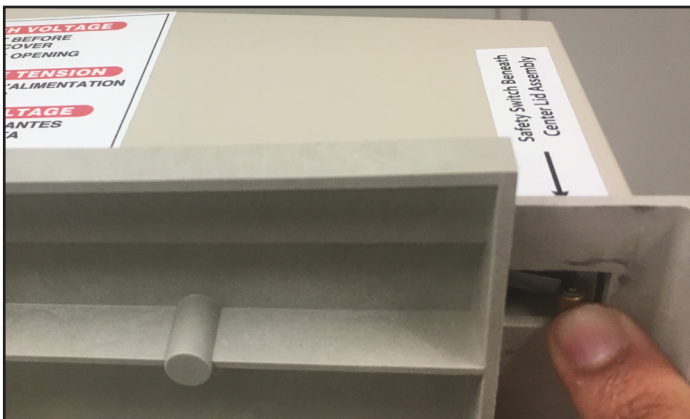


1. Big Dipper units 14000 series or earlier are controlled by a timer. To begin troubleshoot, locate the time of day arrow on the timer and rotate the timer to be set on 12 as illustrated. (Please note, to have the unit in the ON position, push tabs towards the middle on the time of day arrow.)



2. Locate safety switch on the bottom portion of the Electronic Assembly.



3. Push the Safety Switch to engage and turn on the unit.

4. If your heating element does not get warm after 2 minutes, you will need to replace the heating element.